

Leading & Saving

Features :

- Every 3leds (12V) cuttable;
- Special PCB design, ideal heat radiation;
- Color temperature available: 3000K, 6000K, 9000K;
- High ratio of performance and costs;
- Application: outdoor and indoor lighting source, advertise light-box, signage, decoration, etc.

60Chip SMD2835 Flexible LED Strip

Application:

Indoor decorations, entertainment place and shopping mall decoration;
Use for channel letters, sign board, signage, lighting box, etc.



Installation:

Fixed by 3M tape. Hot Melt Glue required to fix the strip about every 0.5m when installing.

Note:

1. Do not bend the flex strip violently or arbitrarily;
2. No glass glue allowed to fix the strip, in case of any damage to LEDs when melting.

Parameters:

Code Name	Color	CCT(K)	View angle (°)	Luminous Flux (lm/pcs)	CRI (Ra)	Light Efficiency (lm/W)	Voltage(V)	Current(A/m)	Power(W/m)
F2	white	6000-12000	120	918-995	≥80	89	12/24	0.9/0.45	10.8

Other Reference Data:

Code Name	Color	Standard Serial Connection Length (m)	Operating Temperature (°C)	Storage Temperature (°C)
F2	white	5	-25~+60	-25~+70

Note:

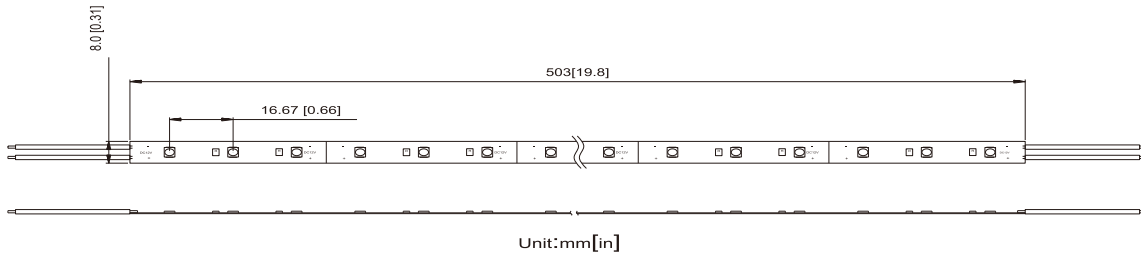
- 1.CCT of white LEDs refer to the Color Temperature Chart.
- 2.Applying LED of different Bin, CCT will be different, and with luminous flux fluctuation in a certain degree.



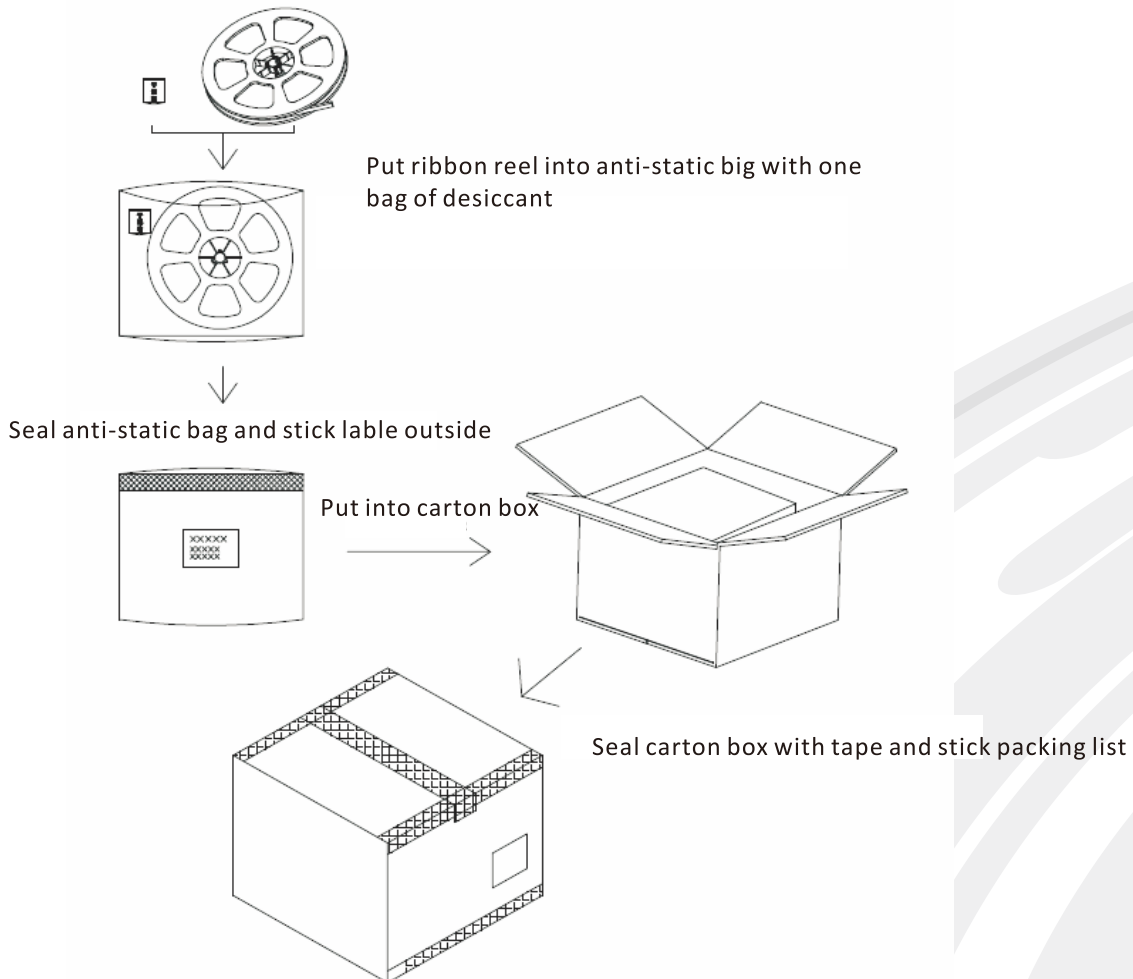
60Chip SMD2835 Flexible LED Strip

Structure Chart:

DC12V



Package Schematic diagram:



60Chip SMD2835 Flexible LED Strip

Packing details :

Note:

1. Carton Size: 630*520*280mm.
2. Roll every strip on a wheel(5M/reel),put every reel into a anti-static bag, 22 bags into a small box,4 boxes into a big carton.

3.

Code Name	Product Size	Qty/CTN (reel)	N.W. (kg)	G.W. (kg)
F2	5m*8mm	88	4.45(1±10%)	12.01(1±10%)

4. Above quantity and weight are subject to the package as diagram shows; Please take the practical product as standard if package changed.

